

PANOSEAL

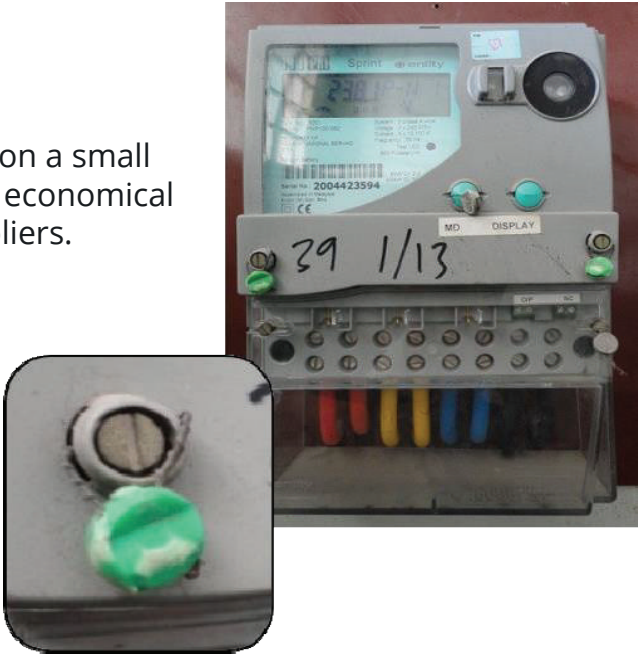
Panoseal is a special purpose seal to apply on a small apertures with different length of wire. It is economical seal to use yet it is easy to apply with seal pliers.

Material

- ABS

Applications

- Utility meters
- Utility valves
- Chemical drums
- Edible oil tanker



Product Code	Dimension		Packaging		
	Diameter, Ø (mm)	Thickness, T (mm)	Quantity per box (pieces)	Weight per box (kg)	Box Dimension, L x W x H (mm)
PANO	9.9	4.5	20,000	7.3	220 X 220 X 335

