

# SKY SEAL

Skyseal is a variable length security seal made of high quality plastic incorporating stainless steel locking mechanism. The strap is smooth and flexible for easier handling and tightening, meanwhile the locking mechanism is strong and weather resistant. The seal is dedicated for all kind of application.



## Material

- Body – Polypropylene
- Jaw – Stainless steel

## Properties

- Average breaking strength – 11 kg

## Marking

- Laser marking or Hot stamping
- Customize name/logo
- Sequential numbering
- Laser barcoding

## Applications

- Food trolleys
- Automatic cash dispensers
- Oil tankers
- Chemical drums
- Doors
- Truck and trailers
- Tote boxes
- ATM cassettes
- Bulk tankers

Product Code	Dimension					Packaging		
	Total Length, TOL (mm)	Working Length, WL (mm)	Diameter, Ø (mm)	Tag Length, TL (mm)	Tag Width, TW (mm)	Quantity per box (pieces)	Weight per box (kg)	Box Dimension, L x W x H (mm)
SKY150ST	184	150	2.0	27	18	1000	2.03	275x215x140
SKY150(TBG)	200	150	2.2	39	18	1000	2.30	275x215x140
SKY200ST	234	200	2.0	27	18	1000	2.20	325x215x140
SKY200LT	250	200	2.0	39	18	1000	2.40	325x215x140
SKY210TO	260	210	2.2	38	22	1000	2.90	295x245x245
SKY210NTO	260	210	2.2	38	22	1000	2.80	295x245x245
SKY250TO	300	250	2.2	38	22	1000	3.00	380x240x140
SKY250NTO	300	250	2.2	38	22	1000	2.90	380x240x140
SKY300NTO	350	300	2.2	38	22	1000	3.20	430x240x140
SKYSEAL300TO	350	300	2.2	38	22	1000	3.10	430x240x140
SKY400	455	400	2.2	46	22	1000	3.90	530x245x150

Note: TBG – Tag with bent groove, ST– Short tag, LT – Long tag, NTO – Non tear off; TO – Tear off

Fig 1: Line Drawing of SKY 150ST, SKY 150LT, SKY 200ST & SKY 200LT.

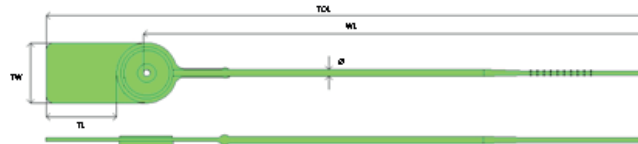


Fig 2: Line Drawing of SKY 210TO, SKY 250TO & SKY 300TO.



Fig 3: Line Drawing of SKY 210NTO, SKY 250NTO & SKY 300NTO.

